

# How did we evaluate the Mangualde Schools Grouping?

## Our Contexts

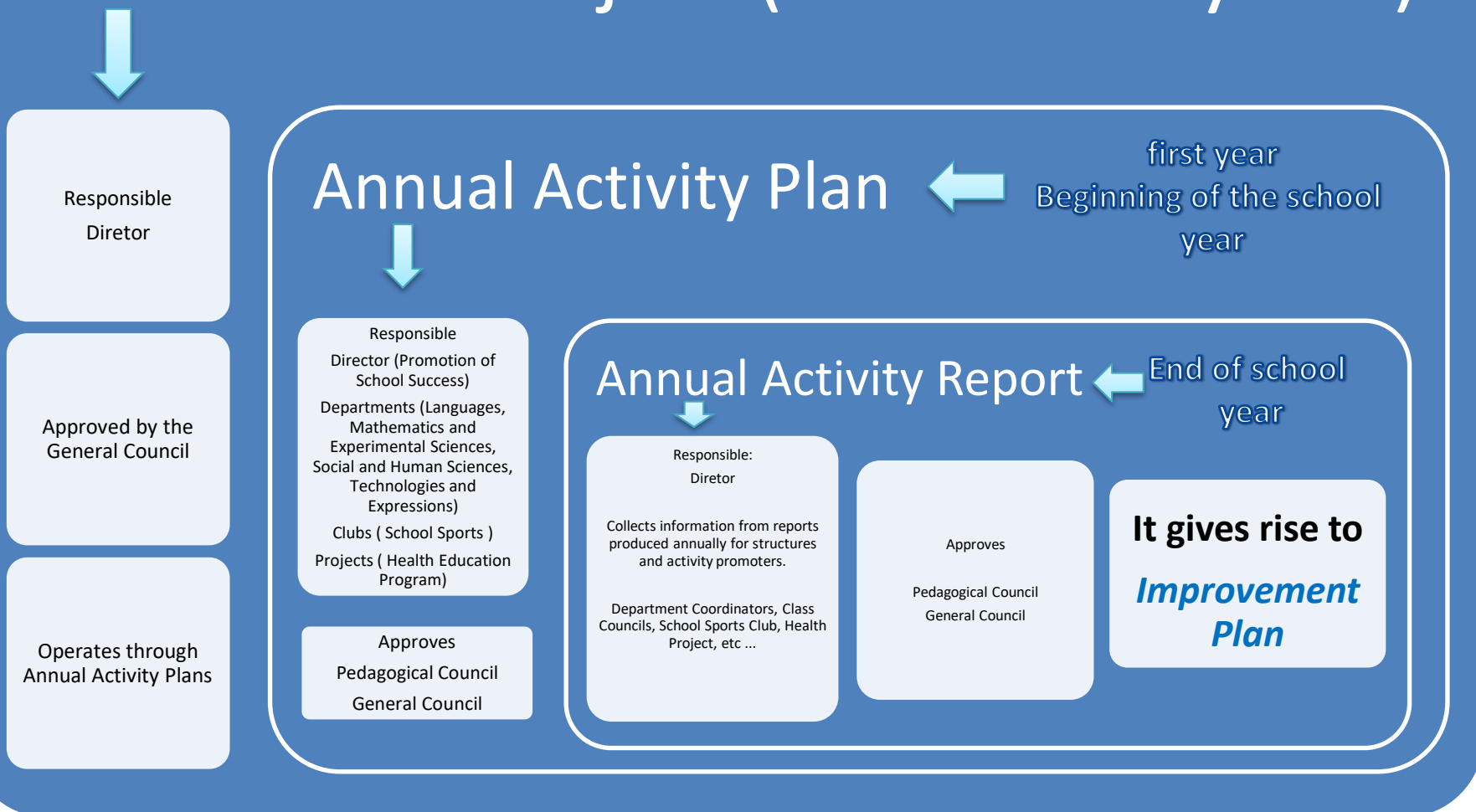
### *Local*

*The municipality of Mangualde is located in the district of Viseu. It has 12 parishes that extend for an area of 219.3 Km<sup>2</sup>. According to the 2011 census, the population variation was -5.3%. It has a significant degree of industrialization, especially the wood industry, automobile assembly, confectionery and metal-mechanics. In services, there is a strong dynamism in the freight sector.*

### *School*

*The pre-school education network covers the whole county. All kindergartens offer the family support component. The first cycle of basic education has 10 schools - 7 spread across rural territory and 3 through urban. Only one has a class with four years of schooling - Fagilde. The remaining "rural schools" have two classes each, linking the 1st / 2nd and 3rd / 4th year. Urban schools have one-year classes. All schools offer the lunch and extension service as well as implement the ACS. The curricular design of the 2nd and 3rd cycles contemplates the articulated teaching of Music in all years of schooling. In the 3rd cycle vocational courses are organized. In secondary education there are the general courses of scientific - humanistic secondary education in all areas, along with professional courses. The offer of vocational courses began. In special education, there are structured teaching units for students with autism spectrum disorders and specialized support for education to students with multideficiency and deaf congenital blindness.*

# Educational Project (Duration 4 years)



# Annual Activity Plan

In Second  
year



Responsible  
Director (Promotion  
of School Success)  
Departments  
(Languages,  
Mathematics and  
Experimental  
Sciences, Social and  
Human Sciences,  
Technologies and  
Expressions)  
Clubs ( School Sports)  
Projects ( Health  
Education Program )

Approves  
Pedagogical Council  
General Council

## Self- Reporting Report



The procedure is the same as that used for the Annual Activity Report plus the application of satisfaction surveys to parents and guardians, teaching staff, non-teaching staff, students, etc.

This is the document that we use to connect the Internal and External Evaluation in order to collect all the information requested by the Inspeção Geral de Educação during its inspection.

## Improvement Plan



The improvement plan is monitored by an interim evaluation, carried out mid-school year, by the school structures.

Note - The improvement plan is prepared in accordance with the annual activity report and also based on the reports of the General Inspection of Education and self-report in the years in which they are produced. This means that every two years the improvement plan gathers information from these documents.

The  
improvement  
plan is evaluated  
at the end of the  
school year.

It gives rise to  
*Improvement  
Report*





*This work is licensed under a [Creative Commons Attribution-NonCommercial 4.0 International License](https://creativecommons.org/licenses/by-nc/4.0/).*

